

MIDVALVE

MECA-INOX SOLUTIONS



MIDVALVE

MECA-INOX New series valves

美嘉诺新系列阀门产品



meca-inox.com.cn

CN/EN-2023

美嘉诺中国

中国大连经济技术开发区淮河西路30-1、2号
116000, 中国
No.30-1, 2, Huaihe West Road, Dalian Development Area
Dalian China 116600

T: 0086-0411-88502888
info@meca-inox.com.cn

meca-inox.com.cn



A BRAND OF GROUP
Meca-inox
SINCE 1955

MIDVALVE

MECA-INOX SOLUTIONS

应用 Application

方便安装、拆卸及清洗的卫生型球阀，用于气体、液体等物料输送。
应用范围包括食品、饮料以及制药和化工工业等领域。全口径及全密封、阀门设计，极度减小流体阻力和残留，因此使得此阀门用于处理真空设备或黏性流体的最佳选择。

The three-piece ball valve is a hygienic ball valve that is easy to install, disassemble and clean.
It is used for gas, liquid and other materials. The valve range includes food, beverage and pharmaceutical and chemical industries. Full-bore and all-inclusive seals and valve design minimize fluid resistance and residue, making this valve the best choice for handling vacuum equipment or viscous fluids.



焊接式三片式全球阀
Three piece ball valve full welded

技术特点 Technical Features

全包式球阀设计、无滞留、高洁净，满足CIP、SIP杀菌和清洗要求、耐高温150°C，压力25bar，自动补偿密封设计，具有扭矩小，寿命长等特点，正常开关10万次以上，可配置各种执行结构，如电动头、卧式气动头、不锈钢立体气动，可锁上手柄，还可以加装控制单元、定位器、位置传感器等，也可装自动控制系统。

All-inclusive ball valve design, no retention, high cleanliness, meet CIP, SIP sterilization and cleaning requirements, high temperature resistance 150 °C, pressure 25 bar, automatic compensation sealing design, with small torque, long life and other characteristics, normal switching more than 100,000 times, Various execution structures can be configured, such as electric head, horizontal pneumatic head, stainless steel three-dimensional pneumatic, lockable handle, control unit, positioner, position sensor, etc. can also be installed, and automatic control system can also be installed.

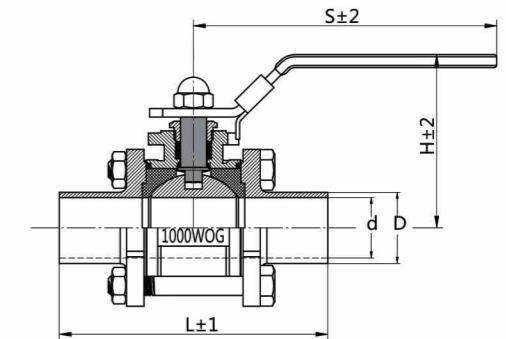
表面处理 Surface Treatment

所有的表面CNC、0.8μm，达到RA0.4μm，电抛光可达到0.25μm。
All surfaces are CNC, 0.8μm, reach RA 0.4μm, and electropolishing can reach 0.25μm.

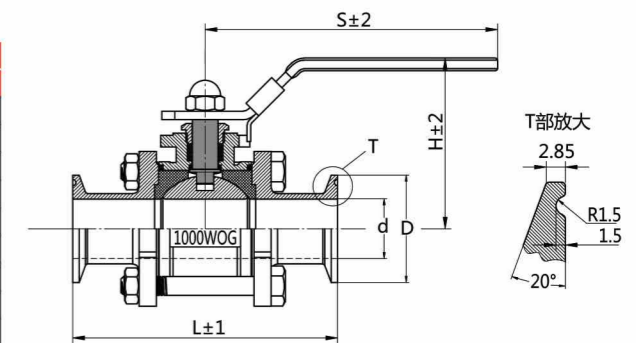


快装三片式全球阀
Clamp three full-package ball valve

Size	ASME BW		ISO2037		L	H	S
	d	D	d	D			
1/2"	9.4	12.7	16	18	90	60	132
3/4"	15.75	19.05	21	—	104	64.5	132
1"	22.1	25.4	22.6	23	115	69	165
1 1/4"	28.45	31.75	31.3	33.7	125	75	170
1 1/2"	34.8	38.1	35.6	38	140	89	194
2"	47.5	50.8	48.6	51	156	97	194
2 1/2"	60.2	63.5	60.3	63.5	198	127	250
3"	72.9	76.2	72.9	76.1	230	135	252
4"	97.4	101.6	97.6	101.6	242	159	252
6"	146.86	152.4	—	—	340	249	430



Size	ASME CL		ISO2037		L	H	S
	d	D	d	D			
1/2"	9.4	25	—	—	90	60	132
3/4"	15.75	50.5	—	—	104	64.5	132
1"	22.1	50.5	22.6	50.5	115	69	165
1 1/2"	35	50.5	35.6	50.5	140	89	194
2"	47.5	64	48.6	64	156	97	194
2 1/2"	59.5	77.5	60.3	77.5	198	127	252
3"	72.2	91	72.9	91	230	135	252
4"	97.6	119	97.6	119	242	159	332
6"	97.6	167	—	—	350	249	430



标准设计 Standard Design

有各标准的阀门系列可以向客户提供, 即用于DIN标准系列, 3A标准系列, SMS标准系列, ISO/IDF标准系列, BS/RJT标准系列, ASME/BPE等标准系列。

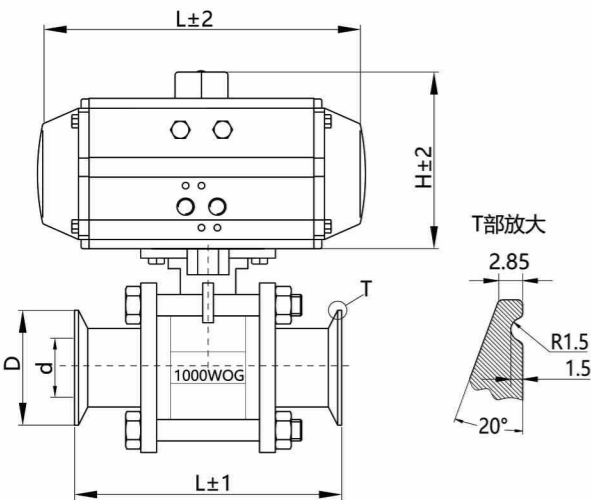
球阀的组成部件一般包括: 一个带有贯通腔的球体、阀体、阀门轴芯以及轴密封圈。

现有的球阀系列规格有: 焊接式球阀、卡箍式球阀、螺纹式球阀等系列球阀。

Various standard valve series can be provided to customers, namely for DIN standard series, 3A standard series, SMS standard series, ISO/IDF standard series, BS/RJT standard series, ASME/BPE and other standard series.

The components of the ball valve generally include: a ball with a through cavity, the valve body, the valve shaft and the shaft sealing ring.

The existing ball valve series specifications include: welded ball valve, clamp type ball valve, threaded ball valve and other series of ball valves.



气动执行器可安装在二通或者三通的符合ISO5211标准的低平台和高平台球阀上 (低平台球阀可加附支架安装执行器)

材质: 316 ASTM-CF8M A351
阀座: PTFE

Pneumatic actuators can be installed on 2-way or 3-way low platform and high platform ball valves according to ISO5211 standard (The low platform ball valve can be attached to the bracket to install the actuator)

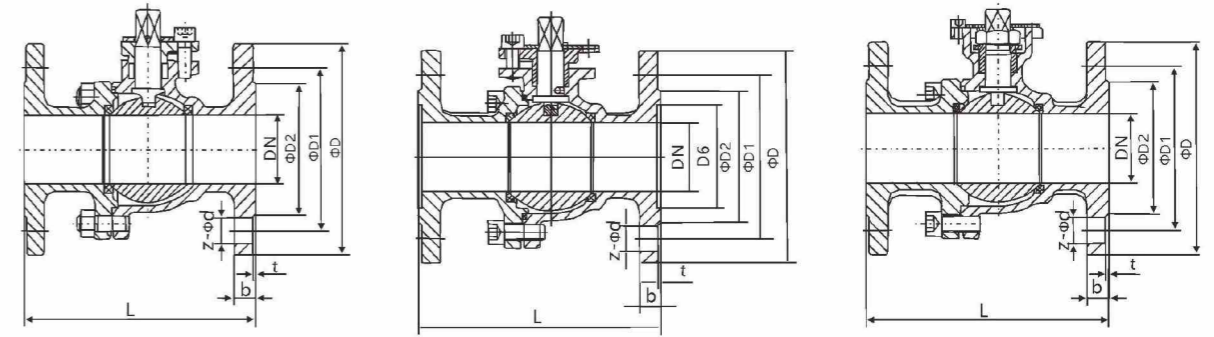
Material: 316 ASTM-CF8M A351
Seat: PTFE

需再结合气源压力及压差选定气缸型号及确认尺寸
The actuator dimension is related to air supply and valve DP

Size	d	D	L	气缸型号 Cylinder model
1/2"	9.4	25	90	AT40
3/4"	15.75	50.5	104	AT50
1"	22.1	50.5	115	AT63
1 1/2"	35	50.5	140	AT75
2"	47.5	64	156	AT83
2 1/2"	59.5	77.5	198	AT92
3"	72.2	91	230	AT125
4"	97.6	119	242	AT140
6"	97.6	167	350	AT145



设计标准	性能规范	Specifications
技术规范: 国标 设计标准: GB/T 12237 结构长度: GB/T 12221 连接法兰: HG20592 试验与检验: GB/T12237 JB9092	公称压力: 1.6, 4.0 MPa	Nominal pressure: 1.6, 4.0 MPa
Design standards Technical Specification: GB/T Design Standard: GB/T 12237 Face to Face: GB/T 12221 Flanged End: GB/T 9113 JB79 HG20592 Test and Inspection: GB/T 12237 JB 9092	气密封试验: 0.6 MPa 阀门主体材料: WCB(C), CF8(P), CF3(PL), CF8M(R), CF3M(RL) 适用介质: 水、蒸汽、油品、硝酸类、醋酸类 适用温度: -29°C ~ 180°C	Gas seal test: 0.6 MPa Valve body material: WCB(C), CF8(P), CF3(PL), CF8M(R), CF3M(RL) Suitable medium: water, steam, oil products, nitric acid, acetic acid Suitable temperature: -29°C ~ 180°C



不带平台
NO platform

低平台
Low platform

高平台
High platform

主要零件材料 Materials of main parts

材料名称Material name	碳钢Carbon steel	不锈钢Stainless steel	
阀体 Body	A216 WCB	A351 CF8	A351 CF8M
阀盖 Bonnet	A216 WCB	A351 CF8	A351 CF8M
球体 Ball	A276 304/A276 316		
阀杆 Stem	2Cr13/A276 304/A276 316		
阀座 Seat	PTFE, RPTFE		
填料 Gland Packing	PTFE/柔性石墨 PTFE/Flexible Graphite		
压盖 Gland	A216 WCB	A315 CF8	
螺栓 Bolt	A193-B7	A193-B8M	
螺母 Nut	A194-2H	A194-8	

主要外形尺寸和连接尺寸 Main dimensions and connection dimensions

国标(GB) 1.6MPa 单位: mm

公称通径 DN(mm)	L	D	D1	D2	b	t	z-Φd
15	130	95	65	45	14	2	4-Φ14
20	140	105	75	55	14	2	4-Φ14
25	150	115	85	65	14	2	4-Φ14
32	165	140/135	100	78	16	2	4-Φ18
40	180	150/145	110	85	16	3	4-Φ18
50	200	165/160	125	100	16	3	4-Φ18
65	220	185/180	145	120	18	3	4-Φ18
80	250	200/195	160	135	20	3	8-Φ18
100	280	220/215	180	155	20	3	8-Φ18
125	320	250/245	210	185	22	3	8-Φ18
150	360	285/280	240	210	22	3	8-Φ23
200	400	340/335	295	265	24	3	12-Φ23
250	533	405	355	320	26	3	12-Φ25

国标(GB) 4.0MPa 单位: mm

公称通径 DN(mm)	L	D	D1	D2	D6	b	t	z-Φd
15	140	95	65	45	40	16	2	4-Φ14
20	152	105	75	55	51	16	2	4-Φ14
25	165	115	85	65	58	16	2	4-Φ14
32	178	140/135	100	78	66	18	2	4-Φ18
40	190	150/145	110	85	76	18	3	4-Φ18
50	216	165/160	125	100	88	20	3	4-Φ18
65	241	185/180	145	120	110	22	3	8-Φ18
80	283	200/195	160	135	121	24	3	8-Φ18
100	305	235/230	190	160	150	26	3	8-Φ23
125	381	270	220	188	176	28	3	8-Φ25
150	403	300	250	218	204	30	3	8-Φ25
200	419	375	320	282	260	38	3	12-Φ30
250	457	450/445	385	345	313	42	3	12-Φ34





设计标准

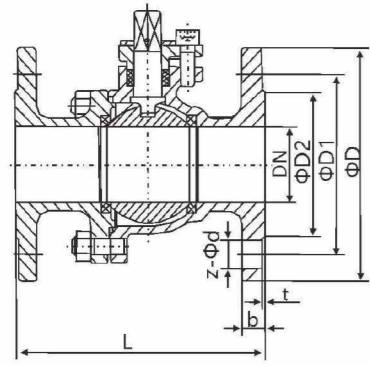
技术规范: 美标
设计标准: API6D API608
结构长度: ASME B16.10
连接法兰: ASME B16.5
试验与检验: API6D API598
Design standards
Technical specifications: ASME/ANSI
Design and Manufacture: API6D API608
Structure length: ASME B16.10
Flanged end: ASME B16.5
Inspection and test: API6D API598

性能规范

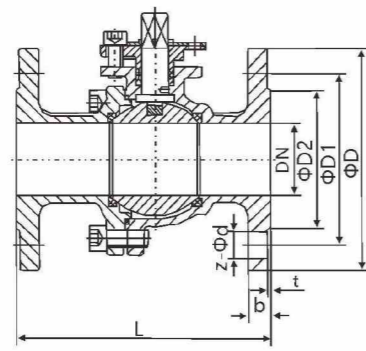
公称压力: 150,300LB
气密封试验: 0.6MPa
阀门主体材料: WCB(C),CF8(P),CF3(PL),CF8M(R),CF3M(RL)
适用介质: 水、蒸汽、油品、硝酸类、醋酸类
适用温度: -29°C ~ 180°C

Specifications

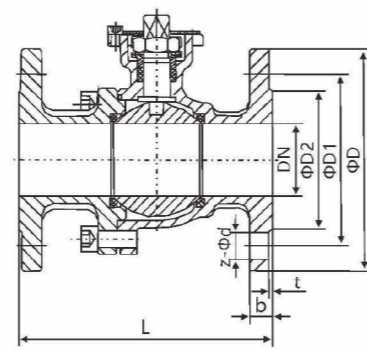
Nominal pressure: 150,300LB
Gas seal test: 0.6MPa
Valve body material: WCB(C),CF8(P),CF3(PL),CF8M(R),CF3M(RL)
Suitable medium: water,steam,oil products,nitric acid,acetic acid
Suitable temperature: -29°C ~ 180°C



不带平台
NO platform



低平台
Low platform



高平台
High platform

主要外形尺寸和连接尺寸 Main dimensions and connection dimensions

美标 (ANSI) 150LB 单位: mm

公称直径 Nominal Diameter		L	D	D1	D2	b	t	z-Φd
in	DN							
1/2"	15	108	90	60.3	34.9	11.5	1.6	4-Φ16
3/4"	20	117	100	69.9	42.9	13	1.6	4-Φ16
1"	25	127	110	79.4	50.8	14.5	1.6	4-Φ16
1 1/4"	32	140	115	88.9	63.5	16	1.6	4-Φ16
1 1/2"	40	165	125	98.4	73	17.5	1.6	4-Φ16
2"	50	178	150	120.7	92.1	19.5	1.6	4-Φ19
2 1/2"	65	190	180	139.7	104.8	22.5	1.6	4-Φ19
3"	80	203	190	152.4	127	24	1.6	4-Φ19
4"	100	229	230	190.5	157.2	24	1.6	8-Φ19
5"	125	356	255	215.9	185.7	24	1.6	8-Φ22
6"	150	394	280	241.3	215.9	25.5	1.6	8-Φ22
8"	200	457	345	298.5	269.9	29	1.6	8-Φ22
10"	250	533	405	362	323.8	30.5	1.6	12-Φ25

主要零件材料 Materials of main parts

材料名称Material name	美标(ANSI)300LB 单位: mm	
	碳钢Carbon steel	不锈钢Stainless steel
阀体 Body	A216 WCB	A351 CF8 / A351 CF8M
阀盖 Bonnet	A216 WCB	A351 CF8 / A351 CF8M
球体 Ball	A276 304/A276 316	
阀杆 Stem	2Cr13/A276 304/A276 316	
阀座 Seat	PTFE, RPTFE	
填料 Gland Packing	PTFE/柔性石墨 PTFE/Flexible Graphite	
压盖 Gland	A216 WCB	A315 CF8
螺栓 Bolt	A193-B7	A193-B8M
螺母 Nut	A194-2H	A194-8



设计标准

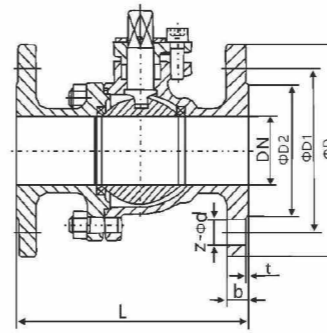
技术规范: 德标
设计标准: DIN3357
结构长度: DIN3202
连接法兰: EN1092-1/DIN2542-2546
试验与检验: DIN3230
Design standards
Technical Specification: DIN
Design and Manufacture: DIN3357
Structure Length: DIN3202
Flanged end: DIN2542-2546
Test and Inspection: DIN3230

性能规范

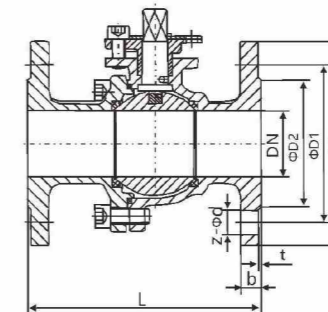
公称压力: 1.6,4.0MPa
气密封试验: 0.6MPa
阀门主体材料: WCB(C),CF8(P),CF3(PL),CF8M(R),CF3M(RL)
适用介质: 水、蒸汽、油品、硝酸类、醋酸类
适用温度: -29°C ~ 180°C

Specifications

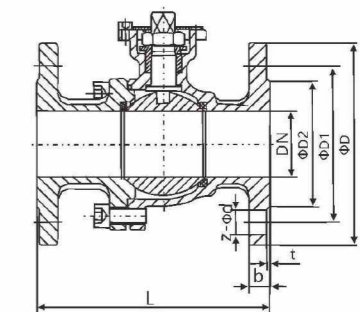
Nominal Pressure: 1.6,4.0MPa
Gas Seal Test: 0.6MPa
Valve Main Material: WCB(C),CF8(P),CF3(PL),CF8M(R),CF3M(RL)
Suitable Medium: water,steam,oil products,nitric acid,acetic acid
Suitable Temperature: -29°C ~ 180°C



不带平台
NO platform



低平台
Low platform



高平台
High platform

主要零件材料 Materials of main parts

材料名称Material name	德标 (DIN) 1.6MPa PN(16bar)		德标 (DIN) 4.0MPa PN(40bar)	
	碳钢Carbon steel	不锈钢Stainless steel	碳钢Carbon steel	不锈钢Stainless steel
阀体 Body	A216 WCB	A351 CF8 / A351 CF8M	A216 WCB	A351 CF8 / A351 CF8M
阀盖 Bonnet	A216 WCB	A351 CF8 / A351 CF8M	A216 WCB	A351 CF8 / A351 CF8M
球体 Ball	A276 304/A276 316			
阀杆 Stem	2Cr13/A276 304/A276 316			
阀座 Seat	PTFE, RPTFE			
填料 Gland Packing	PTFE/柔性石墨 PTFE/Flexible Graphite			
压盖 Gland	A216 WCB	A315 CF8	A216 WCB	A315 CF8
螺栓 Bolt	A193-B7	A193-B8M	A193-B7	A193-B8M
螺母 Nut	A194-2H	A194-8	A194-2H	A194-8

主要外形尺寸和连接尺寸 Main dimensions and connection dimensions

德标 (DIN) 1.6MPa PN(16bar)

公称直径 DN(mm)	L	D	D1	D2	b	t	z-Φd
15	115	95	65	45	16	2	4-Φ14
20	120	105	75	58	18	2	4-Φ14
25	125	115	85	68	18	2	4-Φ14
32	130	140	100	78	18	2	4-Φ18
40	140	150	110	88	18	3	4-Φ18
50	150	165	125	102	20	3	4-Φ18
65	170	185	145	122	20	3	4-Φ18
80	180	200	160	138	20	3	8-Φ18
100	190	220	180	158	20	3	8-Φ18
125	325	250	210	188	22	3	8-Φ18
150	350	285	240	212	22	3	8-Φ22
200	400	340	295	268	24	3	12-Φ22
250	450	405	355	320	26	3	12-Φ26
300	500	460	410	378	28	4	12-Φ26

德标 (DIN) 4.0MPa PN(40bar)

公称直径 DN(mm)	L	D	D1	D2	b	t	z-Φd
15	115	95	65	45	16	2	4-Φ14
20	120	105	75	58	18	2	4-Φ14
25	125	115	85	68	18	2	4-Φ14
32	130	140	100	78	18	2	4-Φ18
40	140	150	110	88	18	3	4-Φ18
50	150	165	125	102	20	3	4-Φ18
65	170	185	145	122	22	3	8-Φ18
80	180	200	160	138	24	3	8-Φ18
100	190	235	190	162	24	3	8-Φ22
125	325	270	220	188	26	3	8-Φ26
150	350	300	250	218	28	3	8-Φ26
200	400	375	320	285	34	3	12-Φ30
250	450	450	385	345	38	3	12-Φ33
300	500	515	450	410	42	4	16-Φ33



设计制造标准/Design & Manufacture Standard

设计标准/Design Standard : GB/T 12238
 结构长度/Face-to-Face : GB/T 12221
 连接尺寸/Connection Size : PN6/PN10/PN16/5K/10K/Class150
 压力试验/Pressure Testing : GB/T 13927



设计制造标准/Design & Manufacture Standard

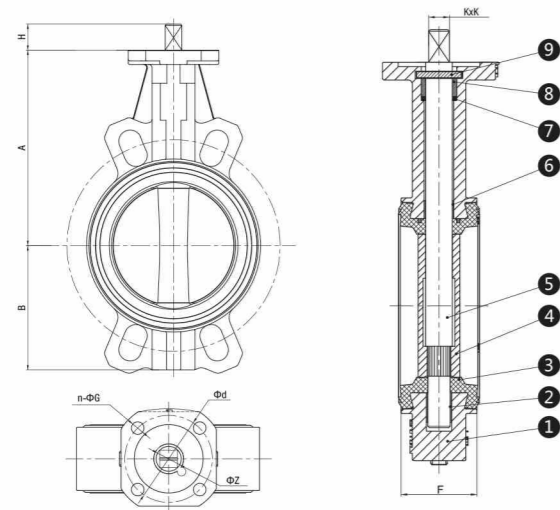
设计标准/Design Standard : GB/T 12238
 结构长度/Face-to-Face : GB/T 12221
 连接尺寸/Connection Size : PN6/PN10/PN16/5K/10K/Class150
 压力试验/Pressure Testing : GB/T 13927

技术参数/Technical parameters :

部件 Main Parts	介质/工况 Medium/ working condition	给排水、中央空调、供热、污水、化工、造纸、船用、食品业等 Can be used in water supply and drainage, central air conditioning, heating, sewage, chemical industry, paper making, Marine, food industry, etc		
阀体 Body		球墨铸铁 / 铸钢 / 不锈钢等 Ductile iron/WCB/SS,etc.		
阀板 Disc		不锈钢 / 双相不锈钢 / 铜合金 Ductile iron/WCB		
阀座 Seat		丁腈橡胶 NBR	乙丙橡胶 EPDM	氟橡胶 VITON
适用温度 Suitable temperature		-20°C~80°C	-20°C~100°C	-10°C~180°C

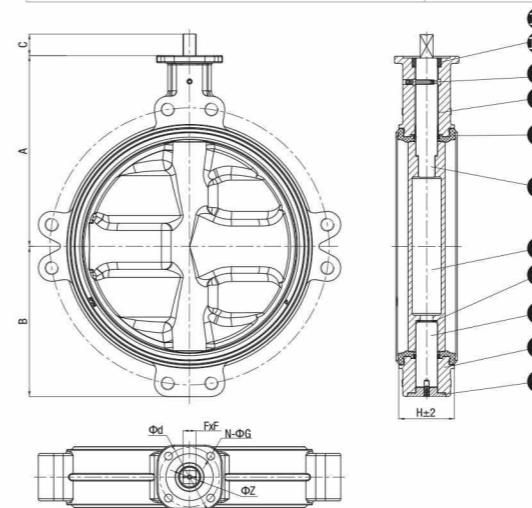
技术参数/Technical parameters :

部件 Main Parts	介质/工况 Medium/ working condition	给排水、中央空调、供热、污水、化工、造纸、船用、食品业等 Can be used in water supply and drainage, central air conditioning, heating, sewage, chemical industry, paper making, Marine, food industry, etc		
阀体 Body		球墨铸铁 / 铸钢 / 不锈钢等 Ductile iron/WCB/SS,etc.		
阀板 Disc		不锈钢 / 双相不锈钢 / 铜合金 Ductile iron/WCB		
阀座 Seat		丁腈橡胶 NBR	乙丙橡胶 EPDM	氟橡胶 VITON
适用温度 Suitable temperature		-20°C~80°C	-20°C~100°C	-10°C~180°C



材料表/Main Parts and Materials :

序号/No	名称/Part name	材料/Material
1	阀体 Body	GGG40
2	轴套 Gland bush	SF-1
3	阀座 Seat	EPDM/NBR
4	阀板 Disc	CF8/CF8M/C954
5	阀轴 Shaft	SS420
6	轴套 Gland bush	SF-1
7	O型圈 O ring	NBR
8	轴套 Gland bush	高分子/PTFE
9	轴销 Pin	弹簧钢/Steel



材料表/Main Parts and Materials :

序号/No	名称/Part name	材料/Material
1	端盖 Bottom cover	GGG40
2	阀体 Body	GGG40
3	下阀轴 Below shaft	SS431
4	轴承 Shaft	轴承钢/Steel
5	阀板 Disc	CF8/CF8M/C958
6	上阀轴 Upper shaft	SS431
7	阀座 Seat	EPDM/NBR
8	轴套 Gland bush	SF-1
9	销轴 Pin	SS304
10	密封套 Sealing sleeve	尼龙/Nylon
11	密封圈 Seal ring	EPDM

尺寸数据/Data size :

MM	A±3	B±3	H±1	KxK	F±1	ΦZ	Top Flange od	Φd	n-ΦG
DN50	128	65	19	9x9	43	13	F05	50	4-Φ8
DN65	145	77	19	9x9	46	13	F05	50	4-Φ8
DN80	155	91	19	9x9	46	13	F05	50	4-Φ8
DN100	165	105	22	14x14	52	18	F07	70	4-Φ10
DN125	185	117	24	17x17	56	22	F07	70	4-Φ10
DN150	200	128	24	17x17	56	22	F07	70	4-Φ10
DN200	250	170	30	19x19	60	26	F10	102	4-Φ12
DN250	285	200	35	22x22	68	34	F10	102	4-Φ12
DN300	340	240	35	22x22	78	34	F10	102	4-Φ12

尺寸数据/Data size :

MM	A±3	B±3	C	FxF	H±2	ΦZ	Top Flange	Φd	N-ΦG
DN350	340	258	40	27x27	78	35	F10	102	4-Φ12
DN400	400	295	45	27x27	102	40	F14	140	4-Φ18
DN450	420	316	45	36x36	114	45	F14	140	4-Φ18
DN500	465	355	50	36x36	127	50	F14	140	4-Φ18
DN600	530	417	60	46x46	154	60	F16	165	4-Φ22

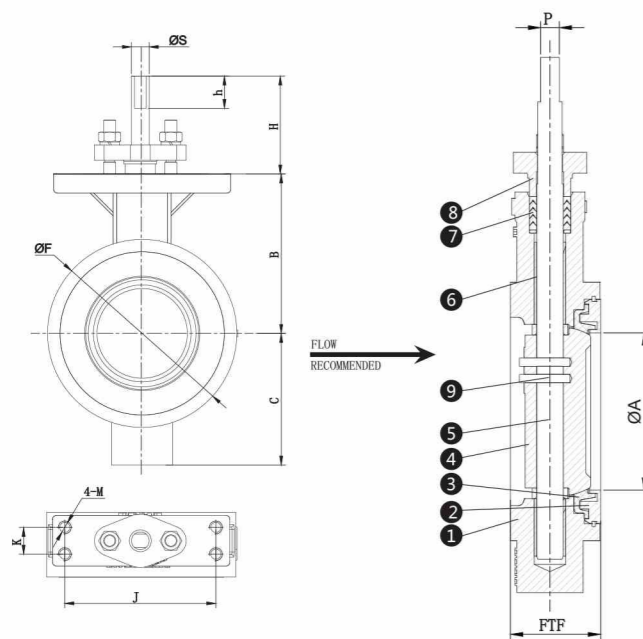


设计制造标准/Design & Manufacture Standard

设计标准/Design Standard : API609
 结构长度/Face-to-Face : ASME B16.10
 连接尺寸/Connection Size : ASME B16.5
 压力试验/Pressure Testing : API598

技术参数/Technical parameters :

部件 Main Parts	介质/工况 Medium/ working condition	给排水、中央空调、供热、污水、化工、造纸、船用、食品业等 Can be used in water supply and drainage, central air conditioning, heating, sewage, chemical industry, paper making, Marine, food industry, etc		
阀体 Body		铸钢/不锈钢 WCB/SS		
阀板 Disc		铸钢/不锈钢 WCB/SS		
阀座 Seat		PTFE/RPTFE/PPL		
适用温度 Suitable temperature		-20°C~150°C	-20°C~180°C	-20°C~220°C

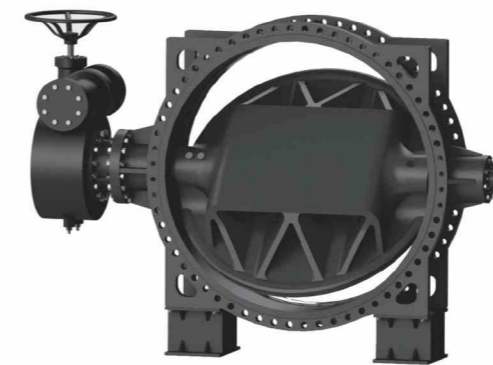


材料表/Main Parts and Materials :

序号/No	名称/Part name	材料/Material
1	阀体 Body	WCB
2	镶针 Insert	A105
3	阀座 Seat	RPTFE
4	阀板 Disc	CF8
5	阀杆 Stem	17-4PH
6	套筒 Sleeve	RPTFE
7	填料 Packing	RPTFE
8	端盖 Cover	WCB
9	销轴 Pin	17-4PH

尺寸数据/Data size :

MM	ØA	B	C	ØF	FTF±3.3	H	h	P	ØS	J	K	M
DN50	50	82	70	102	44	42.5	14	7	10	125.4	22.4	M10
DN65	59	111	82	118	48	82	27	11.2	14.8	125.4	22.4	M10
DN80	73	120	93	132	48	82	27	11.2	14.8	125.4	22.4	M10
DN100	96	133	110	157	54	82	27	11.2	14.8	125.4	22.4	M10
DN125	111	135	120	186	57	82	27	11.2	14.8	125.4	22.4	M10
DN150	142	152	135	217	57	82	27	14	18	125.4	22.4	M10
DN200	188	187	172	273	64	82	27	15.9	21.9	125.4	22.4	M10
DN250	236	231	202	328	71	97	28	20.6	28	142.7	37.3	M12
DN300	282	260	241	376	81	97	33	23.8	33.3	142.7	37.3	M12



设计制造标准/Design & Manufacture Standard

设计标准/Design Standard : GB/T 12238
 结构长度/Face-to-Face : GB/T 12221
 连接尺寸/Connection Size : GB/T 17241.6
 压力试验/Pressure Testing : GB/T 13927

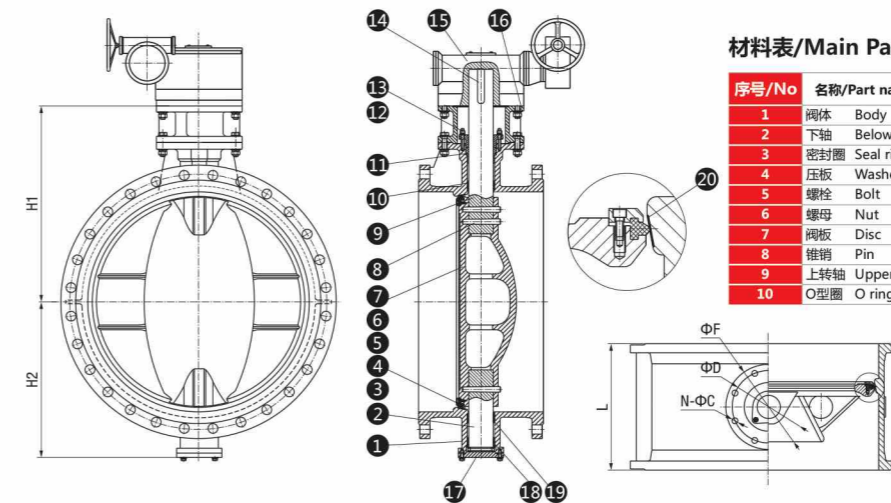
作用与用途/Functions and Uses :

双偏心的效果使阀门被开启后蝶板能迅速脱离阀座、大幅度地消除了蝶板与阀座的不必要的过度挤压、刮擦现象、减轻了开启阻距、降低了磨损、提高了阀座寿命。

The effect of double eccentricity makes the disc can quickly away from the seat once valve is opened, greatly reducing the unnecessary excessive squeeze and scraping of the disc and the seat, reducing the open resistance distance, reducing the wear and tear, improving the life of the seat

技术参数/Technical parameters :

部件 Main Parts	介质/工况 Medium/ working condition	给排水、中央空调、供热、污水、化工、造纸、船用、食品业等 Can be used in water supply and drainage, central air conditioning, heating, sewage, chemical industry, paper making, Marine, food industry, etc		
阀体 Body		球墨铸铁 / 铸钢 / 不锈钢等 Ductile iron/WCB/SS, etc.		
阀板 Disc		球墨铸铁 / 铸钢 Ductile iron/WCB		
阀座 Seat		丁腈橡胶 NBR	乙丙橡胶 EPDM	氟橡胶 VITON
适用温度 Suitable temperature		-20°C~80°C	-20°C~100°C	-10°C~180°C



材料表/Main Parts and Materials :

序号/No	名称/Part name	材料/Material	序号/No	名称/Part name	材料/Material
1	阀体 Body	GGG40	11	轴套 Gland bush	Copper
2	下轴 Below shaft	SS420	12	填料压盖 Packing gland	GGG40
3	密封圈 Seal ring	EPDM	13	填料 Gland packing	NBR
4	压板 Washer	SS304	14	键 Pin	45#
5	螺栓 Bolt	SS304	15	涡轮头 Gear box	-
6	螺母 Nut	SS304	16	支座 Yoke	GGG40
7	阀板 Disc	GGG40	17	端盖 Cover	GGG40
8	销轴 Pin	SS420	18	轴套 Gland bush	Copper
9	上转轴 Upper shaft	SS420	19	O型圈 O ring	NBR
10	O型圈 O ring	NBR	20	阀座 Seat	SS304/SS316

尺寸数据/Data size :

MM	H1±3	H2±3	series	series	ISO 5211			
			L±3	L±3	Top Flange	ΦF	ΦD	N-ΦC
200	330	220	152	230	F10	125	102	4-Φ12
250	372	224	165	250	F10	125	102	4-Φ12
300	502	280	178	270	F10	125	102	4-Φ12
350	520	315	190	290	F10	125	102	4-Φ12
400	490	335	216	310	F16	210	165	4-Φ22
450	520	400	222	330	F16	210	165	4-Φ22
500	570	405	229	350	F16	210	165	4-Φ22
600	640	480	267	390	F25	300	254	8-Φ18
700	680	530	292	430	F25	300	254	8-Φ18
800	750	630	318	470	F25	300	254	8-Φ18
900	815	690	330	510	F30	350	298	8-Φ22
1000	895	725	410	550	F30	350	298	8-Φ22

更多蝶阀产品相关参数, 请与我司联系

To know more data about butterfly valve, please contact us