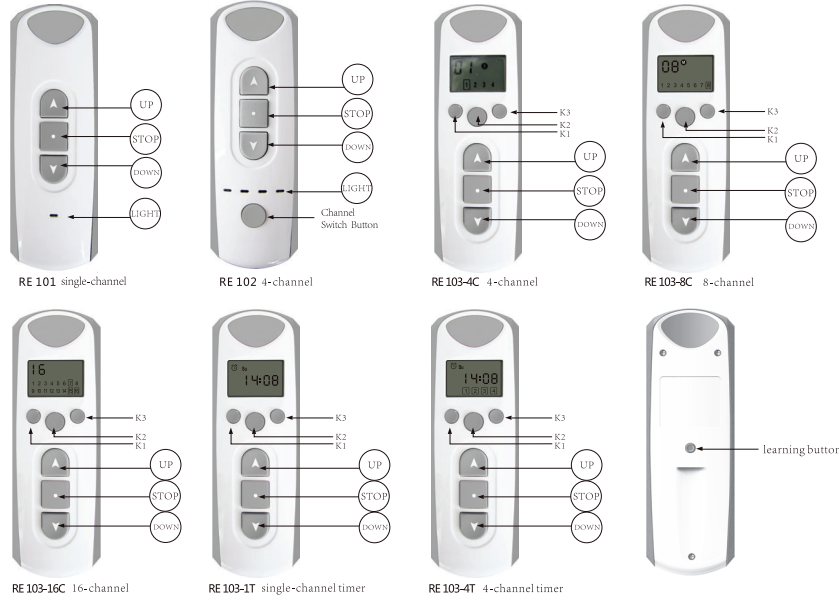


## Emitter Instruction for RE101, RE102, RE103 series

### 1.Product Appearance



### 2.Technique Data

- Power: 3V Model: CR2430
- Protection Index: Ip20
- Working Temperature: -10 C to +60 C (LCD emitter)
- Working Temperature: -20 C to +60 C (Non- LCD emitter)
- Currency: <math>\leq 12mA</math>
- Code: Rolling Code
- Frequency: 433.92MHz

### 3.Code Learning

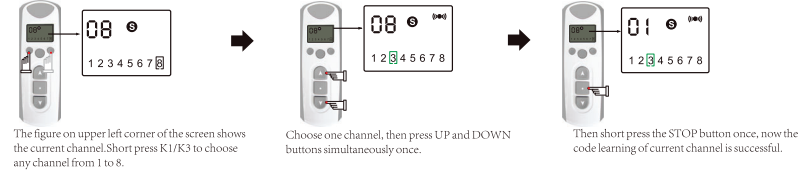
#### 01.single-channel emitter

Press Up and Down buttons simultaneously once,then short press Stop button once.

#### 02.4-channel emitter



#### 03. LCD multi-channel emitter (take RE103-8C as an example)



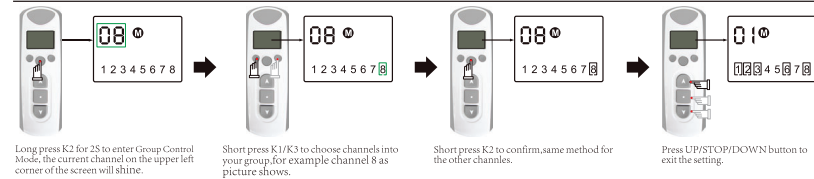
### 4.Single Control

Press K1/K3 button to select a channel, then the corresponding motor can be controlled by the emitter through UP/STOP/ DOWN button.

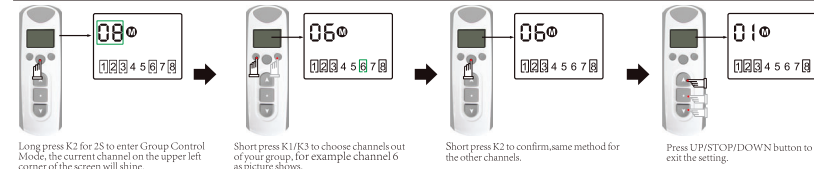
### 5.Group Control(4-channel emitter)



### 6. Group Control(LCD emitter) Short press K2 button to choose group control **M** or Single control **S**



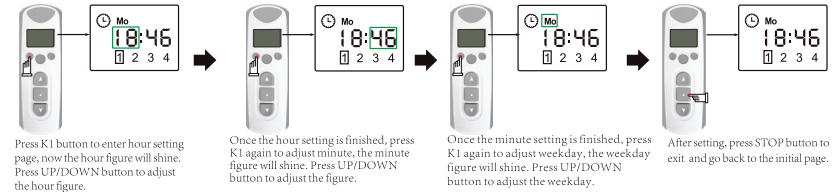
### 7. Delete Group Control



Note: whether in **M** or **S** mode, the current channel is always selected.

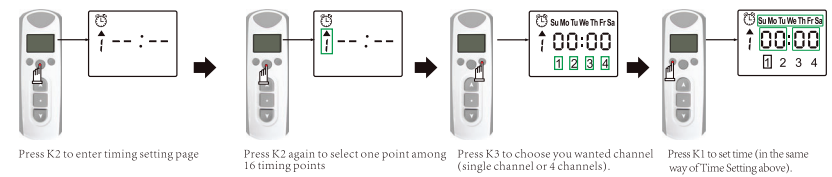
### 8. RE103-4T

#### 01.Time Setting

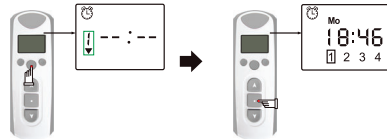


#### 02. Timing Setting (set different time points to make the motor to close or open)

In the initial page, press K2 to enter timing setting page, there is a timing clock on the upper left corner. You can respectively set 8 opening time points and 8 closing time points, in total 16 time points. Press K2 to cycle among 16 time points. Press K3 to choose the output channels which you want (single channel or 4 channels)



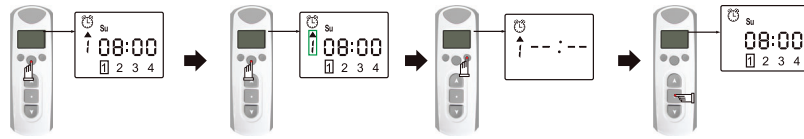
## Emitter Instruction for RE101, RE102, RE103 series



Once one time point is set, press K2 again to select other time points to set time.

Press STOP button to exit the setting.

### 03.Close Timing Function



Press K2 to enter timing setting page.

Press K2 again to select one point need to be closed.

Press K3 until above display appears, which means the point has closed. Press K3 again to retrieve this point.

After setting, press STOP button to exit and go back to the initial page.

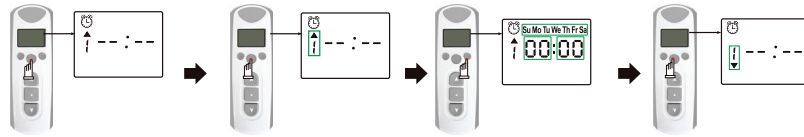
## 9.RE103-1T

### 01.Time Setting

In the same way as RE103-4T Time Setting.

### 02.Timing Setting

In the initial page, press K2 to enter timing setting page, there is a timing clock  on the upper left corner. You can respectively set 8 opening time points and 8 closing time points, in total 16 points . Press K2 to cycle among 16 time points.



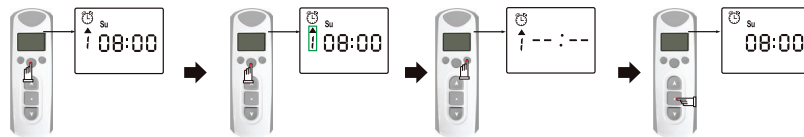
Press K2 to enter timing setting page

Press K2 again to select one point among 16 timing points

Press K3 to enter Time Setting page, then set the time points in the say way as above Time Setting.

Once one time point is set, press K2 again to select other time points to set time.

### 03.Close Timing function



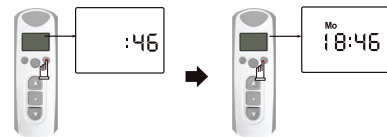
Press K2 to enter timing setting page

Press K2 again to select one point need to be closed.

Press K3 Once to delete the point. Press K3 again to retrieve this point.

After setting, press STOP button to exit and go back to the initial page.


### 04.Stopwatch function



In the initial page, press K3 to enter Stopwatch page.

If you want to exit from stopwatch page, press K3 again to go back to initial page.

### Note:

- ▶ The emitter must enter into timing setting page if you want to set timing points (there is a timing clock  on the upper left), otherwise, the setting is invalid. If there is no timing clock on the upper left, hold STOP button and press k2 within 10 seconds, then the timing clock will be there.
- ▶ You'd better not press emitter's buttons too long. Each pressing is about 0.5s, and the pressing interval is about 1S.
- ▶ The emitter will stop working if the battery is in low power. Please replace the battery in this case.